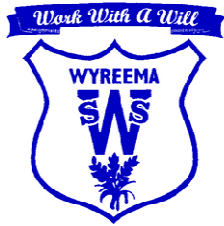
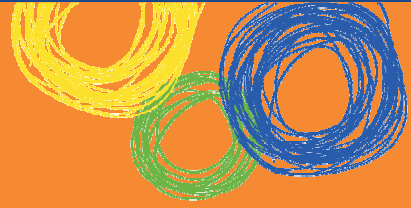


# Wyreema State School (0524)

## Queensland State School Reporting

### 2012 School Annual Report



Postal address	12 High St., Wyreema, 4352
Phone	(07) 4696 2130
Fax	(07) 4696 2538
Email	the.principal@wyreemass.eq.edu.au
Webpages	Additional reporting information pertaining to Queensland state schools is located on the <a href="#">My School</a> website and the <a href="#">Queensland Government data</a> website.
Contact Person	Mrs Sandy Tetzlaff

## Principal's foreword

### Introduction

*Our School Annual Report for 2012 gives a brief snapshot of the satisfaction and performance of our students, staff and community and also outlines our progress and outlook for the future.*

*Wyreema State School is a dynamic teaching and learning environment where we believe that quality teaching is the key to student improvement and data is used to inform strategy. Our school provides strong leadership and a shared commitment to our core priorities of teaching and learning, student and school performance and early years learning.*

*We offer extensive levels of student support with a high adult-student ratio. We cater for students' with differing abilities and skills and all are included in every aspect of the curriculum and school life. Technology is embedded throughout all of the Key Learning Areas, and students' access computers frequently. As well as quality teaching and learning and practising energetic and best practice pedagogy, we offer:*

- o *A comprehensive, popular weekly playgroup with age appropriate learning and fun activities.*
- o *Sports including hockey coaching, Sports Expos, athletics, P.E lessons, Fun Runs and swimming.*
- o *Cultural activities including dance, drama, singing, music lessons, visual arts, attendance at dramatic performances and other cultural events including the TYME Festival and the Cambooya Arts Festival.*
- o *Culminating Activity Days each and Awards Night at the end of the school year.*
- o *Fortnightly newsletters, updates through Facebook and a dynamic website.*

*Our school rules are to:*

- • *BE SAFE*
- • *BE RESPECTFUL*
- • *BE A RESPONSIBLE LEARNER*

*Our school rules underpin our Values Education Program where a value each week is explicitly taught, modelled and consolidated with our students. We expect and achieve high levels of student behaviour and have traditionally achieved high levels of student attendance.*

# Queensland State School Reporting

## 2012 School Annual Report



*We have a very supportive community of parents and carers who work together to continue to improve our school. Our active P and C meet most months and energetically raise funds to further enhance the facilities and learning experiences for the students.*

*Wyreema School is situated in a high growth area. Due to recent housing developments in the local area, it is expected that the enrolment numbers will increase significantly in the coming years.*

*Together, our whole school community strives to achieve Excellence in Education.*

### School progress towards its goals in 2012

The following key priorities and strategies have been taken from the 2012 AIP:

#### Student Performance

- NAPLAN targets to be achieved.
- Improved NAPLAN results as outlined in the NAPLAN plan.
- Continue to implement and reflect on Whole School Reading Program.
- Focus energetically on the Whole School Spelling Program with agreed strategies, terminology and high priority.
- Implement C2C multi-age units in Science, Maths and English in both classrooms.
- Implement school EATSIPS plan to embed cultural perspectives.

#### School Curriculum

- Ensure that School Curriculum is aligned with National Curriculum.
- Ensure that all Curriculum Audit recommendations are implemented

#### Staff Development & Performance

- All staff will develop a Developing Performance Plan in consultation with Principal.
- Staff access PD as negotiated with Principal
- Principal develops Personal Development Plan with ARD
- Staff to improve capabilities in ICTs

#### Community confidence

- Continued and heightened high emphasis on community communication and involvement in the school

#### Other School Based Key Priorities

- Teachers to use Data to drive planning and assessment
- Earth Smart Environmental Education

Excellent progress has been made in these 2012 goals. All plans have been actioned and we are experiencing success within each. Long term students show a general improvement trend in their NAPLAN scores. Student reading and spelling results continue to improve due to our unrelenting focus and strategic planning in this area. C2C units in Maths, English, Science and History have successfully been implemented throughout the school, and the EATSIPS plan continues to be respected and implemented.

Our school curriculum is closely aligned with the National Curriculum. All Curriculum, Learning and Teaching Audit and Financial Audit recommendations have been implemented

Staff have accessed excellent professional development opportunities, thus enhancing skills and knowledge for use in the classroom and school environment. The weekly Playgroup continues to grow in educational richness and popularity. Developing Performance Plans for all staff are in place with a common goal for staff to continue in their ICT learning.

Our communication with the community includes fortnightly newsletters, frequently updated Facebook page, Website, informal and formal parent/teacher meetings, monthly P and C meetings and fundraising events.

Staff, students and community continue to be vigilant with environmental concerns – another \$25 000 worth of solar panelling has been installed. Teacher meetings, moderations with small like schools and Cluster meetings assist staff to ensure that student results are assessed similarly across schools and that all planning and assessment is driven by data.

# Queensland State School Reporting

## 2012 School Annual Report



### Future outlook

Our school will continue to:

#### Improve School Performance

- NAPLAN targets to be achieved.
- Improved NAPLAN results as outlined in the NAPLAN plan.
- Continue to implement and reflect on Whole School Programs.
- Focus energetically on the Whole School Spelling Program with agreed strategies, terminology and high priority.
- Continued immersion of Australian Curriculum

#### Implement the Australian Curriculum

- Successful implementation of the History Australian Curriculum.
- Ensure that School Curriculum is aligned with National Curriculum.
- Ensure that all Curriculum Audit recommendations are implemented

#### Implement Whole School Pedagogical Framework/Practices

- All staff will develop a Developing Performance Plan in consultation with Principal.
- Staff access PD as negotiated with Principal and as per School PD Plan
- Principal develops Personal Development Plan with ARD
- Development of School Pedagogical Framework.

#### Productive Partnerships with School Community Stakeholders.

- Continued and heightened high emphasis on community communication and involvement in the school

# Our school at a glance

## School Profile

**Coeducational or single sex:** Coeducational

**Year levels offered in 2012:** Prep - Year 7

**Total student enrolments for this school:**

	Total	Girls	Boys	Enrolment Continuity (Feb – Nov)
2010	31	12	19	93%
2011	27	11	16	83%
2012	34	17	17	97%

Student counts are based on the Census (August) enrolment collection.

## Characteristics of the student body:

Wyreema State School has a diverse student body with family occupations ranging from farming, mining, trades and professional people. As Wyreema is presently classed as a small town (although) it is rapidly growing - the school is in close proximity of most homes and therefore many of our students walk or ride to school.

## Average Class sizes

Phase	Average Class Size		
	2010	2011	2012
Prep – Year 3	16	13	13
Year 4 – Year 10	12		
Year 11 – Year 12			

## School Disciplinary Absences

Disciplinary Absences	Count of Incidents		
	2010	2011	2012
Short Suspensions - 1 to 5 days	2	0	0
Long Suspensions - 6 to 20 days	0	0	0
Exclusions	0	0	0
Cancellations of Enrolment	0	0	0

# Our school at a glance

## Curriculum offerings

### Our distinctive curriculum offerings include:

- LOTE (Indonesian)
- Music – Singing, Musical Notation, Support in Group/Individual Performances.
- Physical Education Lessons – leading to School's Athletics' Carnival, Cambooya District Athletics' Carnival.
- Swimming Lessons – Term 1 and Term 4.

## Extra curricula activities

School Leadership Programs – including Upper Pod Camp, Leadership conference.

Student lead Parades – weekly, rotation of duties.

## How Information and Communication Technologies are used to assist learning

We embrace technology as a valuable learning and engaging pedagogical tool and have therefore invested to ensure a student computer ratio of 1:2.5 – 1 student to every 2 and a half computers. Most students access Reading Eggs/Reading Eggspress, Mathletics and Spelling City each school day. Each classroom has an interactive whiteboard which are constantly used to enhance student learning programs. We have a tablet in use in the Upper Pod and are considering purchasing a class set.

## Social climate

The students at Wyreema State School are usually happily engaged in their learning and school life in general. We rarely experience inappropriate behaviours. Our students know that they are treated fairly, that consequences are consistent and are generally happy to be at school. Our school rules and Values Education program are part of the positive social climate at our school.

Our school rules are to:

- BE SAFE
- BE RESPECTFUL
- BE A RESPONSIBLE LEARNER

Our school rules underpin our Values Education Program where a value each week is explicitly taught, modelled and consolidated with our students. We expect and achieve high levels of student behaviour and have traditionally achieved high levels of student attendance.

Our School Chaplain, Dr Neil Parker, is available for students and parents on Tuesdays and Thursdays and is integral to our Learning and Wellbeing framework.

## Parent, student and staff satisfaction with the school

The results below speak for themselves – 100% of our parents believe that their child is getting a good education, their child likes being here, their child feels safe, their child's learning needs are being met, their child is making good progress, teachers at this school expect their child to do his or her best, teachers at this school motivate their child to learn, teachers treat students fairly, the school works with them to support their child's learning, student behaviour is well managed, the school looks for ways to improve and the school is well maintained.

100% of our students believe that they are getting a good education at school, they like being at their school, they feel safe at their school, their teachers expect them to do their best, their teachers provide them with useful feedback about their school work, teachers treat students fairly at their school, they can talk to their teachers about their concerns, student behaviour is well managed at their school, their school looks for ways to improve and their school is well maintained.

All staff believe that they have good access to quality professional development and morale is high.

# Our school at a glance

<b>Performance measure</b> (Nationally agreed items shown*)	
Percentage of parents/caregivers who agree that:	2012 <sup>#</sup>
their child is getting a good education at school	100.0%
this is a good school	94.4%
their child likes being at this school*	100.0%
their child feels safe at this school*	100.0%
their child's learning needs are being met at this school*	100.0%
their child is making good progress at this school*	100.0%
teachers at this school expect their child to do his or her best*	100.0%
teachers at this school provide their child with useful feedback about his or her school work*	94.1%
teachers at this school motivate their child to learn*	100.0%
teachers at this school treat students fairly*	100.0%
they can talk to their child's teachers about their concerns*	94.4%
this school works with them to support their child's learning*	100.0%
this school takes parents' opinions seriously*	88.9%
student behaviour is well managed at this school*	100.0%
this school looks for ways to improve*	100.0%
this school is well maintained*	100.0%

<b>Performance measure</b> (Nationally agreed items shown*)	
Percentage of students who agree that:	2012 <sup>#</sup>
they are getting a good education at school	100.0%
they like being at their school*	100.0%
they feel safe at their school*	100.0%
their teachers motivate them to learn*	87.5%
their teachers expect them to do their best*	100.0%
their teachers provide them with useful feedback about their school work*	100.0%
teachers treat students fairly at their school*	100.0%
they can talk to their teachers about their concerns*	100.0%
their school takes students' opinions seriously*	87.5%

## Our school at a glance

student behaviour is well managed at their school*	100.0%
their school looks for ways to improve*	100.0%
their school is well maintained*	100.0%
their school gives them opportunities to do interesting things*	85.7%

### Performance measure (Nationally agreed items shown\*)

Percentage of school staff who agree:	2012 <sup>#</sup>
that they have good access to quality professional development	100.0%
with the individual staff morale items	100.0%

\* Nationally agreed student and parent/caregiver items were incorporated in the School Opinion Survey in 2012.

<sup>#</sup> Percentage of respondents who Somewhat Agree, Agree or Strongly Agree with the statement. Due to changes to the School Opinion Surveys in 2012, comparisons with results for previous years are not recommended.

DW = Data withheld to ensure confidentiality.

# Our school at a glance

## Involving parents in their child's education

We have an open door policy at our school, where parents are encouraged to join in and assist with student learning. Parents and Carers are invited to volunteer in the classroom and are a valuable resource in our school.

Many of our families are involved in P and C and we offer childcare to assist families attend. Our school has a very active P and C that host a "Meet and Greet" at the beginning of each school year, encourage participation in multiple fundraisers throughout the year, and are integral to the success of Sports Carnivals, Awards Night, Excursions and School Camps.

Parents are strongly encouraged to attend Culminating Activity Days and weekly Parades where students are awarded certificates for academic success.

Class Information Sessions are held at the beginning of each school year and parents are reminded through newsletters during the year that we welcome appointments to discuss their child's progress at school. Reports are sent home each semester and parent-teacher interviews are encouraged – with most families choosing to attend.

## Reducing the school's environmental footprint

Data is sourced from school's annual utilities return and is reliant on the accuracy of these returns.

Having already been successful recipients of solar panel grants, we have once again been successful in gaining another \$25 000 worth of solar panelling. This significantly redeems electricity usage which has risen due to increased use of technology.

Water has also risen somewhat and this is due to establishing many new, climate suitable, native plants and also that the school believes that the our students need some soft turf to play on and beautiful surrounds to complement, support and build pride in our school for the whole school community. All new gardens and/or new bushes/trees planted have been intelligently selected for their appropriateness in the Wyreema environment.

Students present the Environmental Tip of the Week on Parade and this is also written into our school newsletter. We have ample water tanks at our school and this water is used as much as possible instead of town water. Privet and cotoneaster plants continue to be removed from the school grounds as they are harmful to our Australian environment. Our school updates the SEMP (Strategic Environmental Management Plan) regularly which further outlines our beliefs and strategies for future reduction of our environmental footprint.

	Environmental footprint indicators	
	Electricity kWh	Water kL
2009-2010	14,378	90
2010-2011	6,922	133
2011-2012	8,742	189



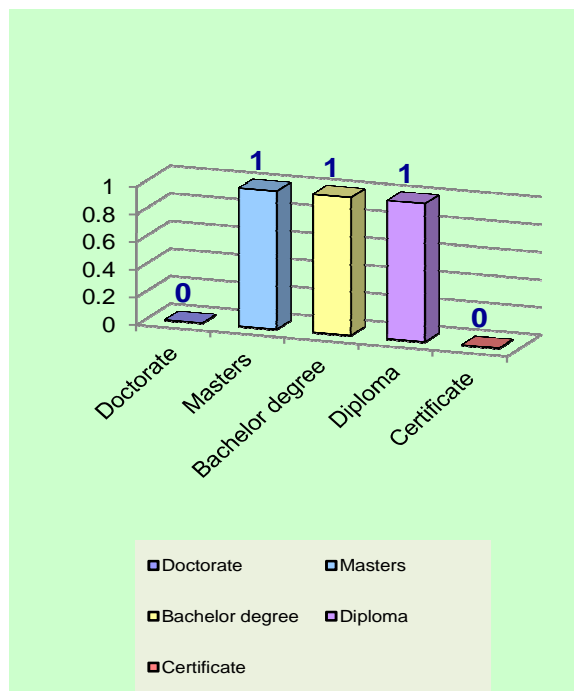
# Our staff profile

## Staff composition, including Indigenous staff

2012 Workforce Composition	Teaching Staff	Non-teaching Staff	Indigenous Staff
Headcounts	5	4	0
Full-time equivalents	3.8	2.2	0

## Qualifications of all teachers

Highest level of attainment	Number of classroom teachers and school leaders at the school
Doctorate	0
Masters	1
Bachelor degree	1
Diploma	1
Certificate	0



## Expenditure on and teacher participation in professional development

The total funds expended on teacher professional development in 2012 were \$3 014.55.

The major professional development initiatives are as follows:

- Implementation of National Curriculum
- ICT use with National Curriculum
- Pedagogical practices

The proportion of the teaching staff involved in professional development activities during 2012 was 100%.

# Our staff profile

## Average staff attendance

	2010	2011	2012
Staff attendance for permanent and temporary staff and school leaders.	96.9%	97.8%	94.7%

## Proportion of staff retained from the previous school year

From the end of the previous school year, 100% of staff was retained by the school for the entire 2012 school year.

## School income broken down by funding source

School income broken down by funding source is available via the My School website at <http://www.myschool.edu.au/>.

To access our income details, click on the *My School* link above. You will then be taken to the *My School* website with the following 'Find a school' text box.

**Find a school**

Search by school name

Search by suburb, town or postcode

Sector  Government  
 Non-government

Where it says 'Search by school name', type in the name of the school you wish to view, and select <GO>. Read and follow the instructions on the next screen; you will be asked to accept the **Terms of Use** and Privacy Policy before being given access to the school's My School entry web page.

School financial information is available by selecting 'School finances' in the menu box in the top left corner of the school's entry web page. If you are unable to access the internet, please contact the school for a paper copy of income by funding source.

## Key student outcomes

Student attendance	2010	2011	2012
The overall attendance rate for the students at this school (shown as a percentage).	94%	95%	95%
The overall attendance rate in 2012 for all Queensland state Primary schools was 93%.			

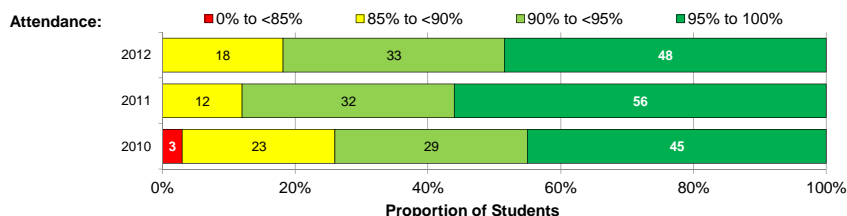
### Student attendance rate for each year level (shown as a percentage)

	Year 1	Year 2	Year 3	Year 4	Year 5	Year 6	Year 7	Year 8	Year 9	Year 10	Year 11	Year 12
2010	94%	92%	DW	95%	93%	96%	91%					
2011	93%	98%	94%	98%	DW	93%	97%					
2012	98%	94%	94%	94%	98%	96%	96%					

DW = Data withheld to ensure confidentiality.

### Student Attendance Distribution

The proportions of students by attendance range.



### Description of how non-attendance is managed by the school

Non-attendance is managed in state schools in line with the DET policies, SMS-PR-029: Managing Student Absences and SMS-PR-036: Roll Marking in State Schools, which outline processes for managing and recording student attendance and absenteeism.

We believe that "Every Day Counts" when it comes to student learning and this is advertised around our school as well as published in the newsletters. We ask that parents phone the Office if their child is away and we make contact with parents if a child has an unexplained absence. Importantly, we ensure that our curriculum and pedagogical practices are engaging, making our school a pleasurable and exciting place for students to be.

### National Assessment Program – Literacy and Numeracy (NAPLAN) results – our reading, writing, spelling, grammar and punctuation, and numeracy results for the Years 3, 5, 7 and 9.

Our reading, writing, spelling, grammar and punctuation, and numeracy results for the Years 3, 5, 7 and 9 are available via the My School website at <http://www.myschool.edu.au/>.

# Performance of our students

To access our NAPLAN results, click on the *My School* link above. You will then be taken to the *My School* website with the following 'Find a school' text box.

**Find a school**

Search by school name

Search by suburb, town or postcode

Sector  Government  
 Non-government

Where it says 'Search by school name', type in the name of the school whose NAPLAN results you wish to view, and select <GO>.

Read and follow the instructions on the next screen; you will be asked to accept the **Terms of Use** and Privacy Policy before being able to access NAPLAN data.

If you are unable to access the internet, please contact the school for a paper copy of our school's NAPLAN results.

## Achievement – Closing the Gap

N/A

---

---

---

---

---

---

